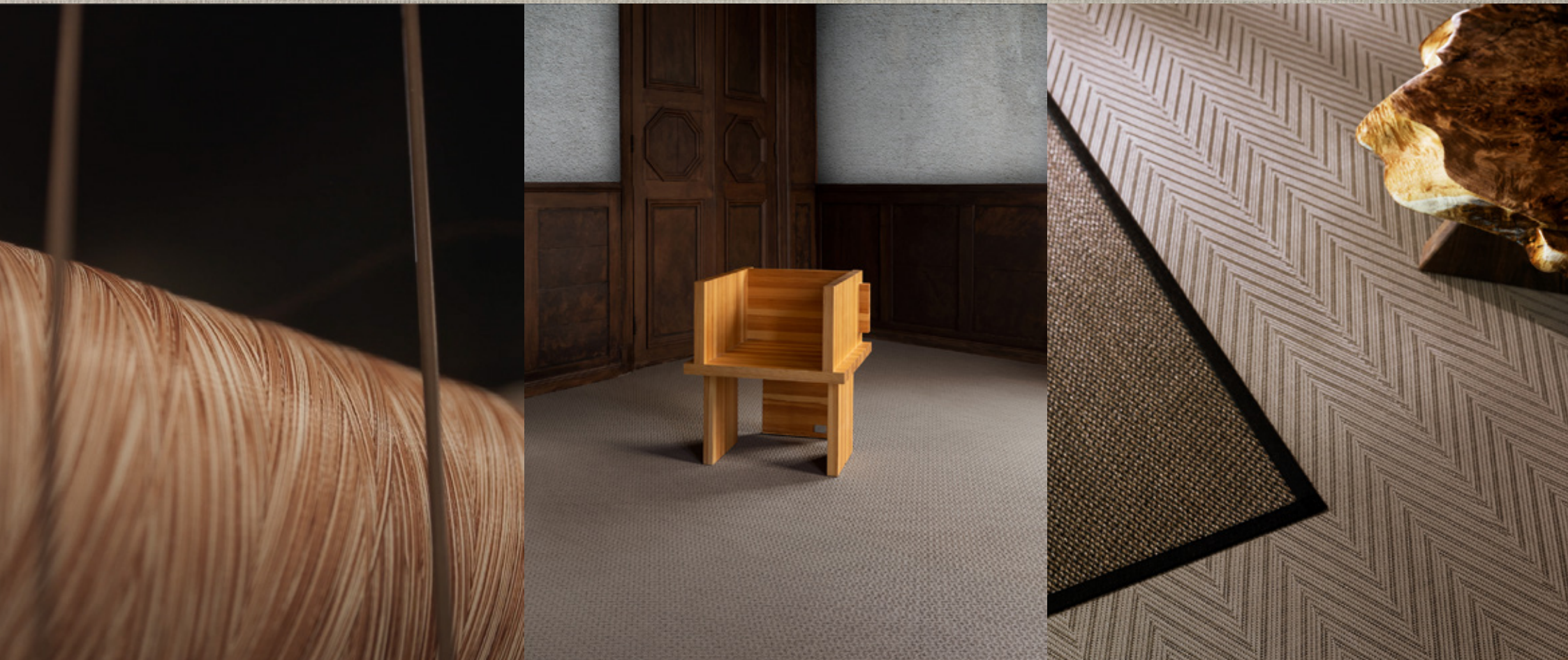


# BOLON



**BOLON CARE – BEAUTY WITH BENEFITS**



## BEAUTY WITH BENEFITS

*Caring is an important value at Bolon – about our employees, our customers, our history, the environment and the products we sell. However, we also understand that our obligation to care goes further than this.*

*Bolon flooring represents an unbeatable combination of design, durability, ease of cleaning, maintenance, and sustainability. Looking after it correctly will give you many years of pleasure and performance.*

*In these instructions, you will find out how simple cleaning and maintaining our flooring is and how you can enjoy a positive result on the LCCA and a more pleasant environment.*





## INDEX

- 4 BOLON COMPARED
- 7 MAKING THE CORRECT CHOICE
- 9 CLEANING & MAINTENANCE INSTRUCTIONS
- 13 IN YOUR WORDS



## BOLON COMPARED

*Bolon flooring is impermeable and solid – the flooring’s construction is completely unique and as such, it offers unique characteristics and benefits such as the possibility for wet cleaning.*

*Bolon flooring is simple to take care of – with a vacuum cleaner, scrubbing brush and water, 99% of cleaning and maintenance can be accomplished.*





CHARACTERISTIC	BOLON	TEXTILE CARPET	LINO RUBBER RESILIENT VINYL	HARD WOOD	CONCRETE STONE CERAMIC
<i>LCCA - Life Cycle Cost Analysis <sup>1</sup></i>	●	●	●	●	●
<i>Extensive product lifespan <sup>2</sup></i>	●	●	●	●	●
<i>Appearance retention over time <sup>3</sup></i>	●	●	●	●	●
<i>Textile appearance</i>	●	●	●	■	■
<i>Comfort under foot</i>	●	●	●	■	■
<i>Impact sound reduction <sup>4</sup></i>	●	●	●	●	●
<i>Slip resistance</i>	●	●	●	●	●
<i>Impervious material</i>	●	■	●	■	●
<i>Antistatic properties</i>	●	●	●	●	●
<i>Minimal chemical properties</i>	●	■	●	●	●

● LOW   ● HIGH   ■ NOT AVAILABLE

<sup>1</sup> Due to lower cleaning and maintenance costs comparing carpet and hardwood and the durability of Bolon flooring the LCCA will give a positiv result.

<sup>2</sup> Bolon flooring has a long product lifetime during which we offer warranties up to 15 years.

<sup>3</sup> Unlike textile carpet or hardwood, our flooring retains its appearance without flattening.

<sup>4</sup> Our acoustic flooring improves the decibel value up to 22 dB.

# A HEALTHIER AND MORE HYGIENIC ALTERNATIVE TO CARPET

## BOLON

UNIQUE AND RESILIENT YARN  
TIGHT WEAVE LOW  
SURFACE AREA

*Resilient yarns are woven tightly together and secured by layers of impenetrable backing to make Bolon flooring impervious to liquids, spills and germs.*



## CARPET

SYNTHETIC/WOOL COMPOSITION  
LOSE AND EXPOSED FIBRES  
HIGH SURFACE PROFILE



## MAKING THE CORRECT CHOICE

*Creating a durable, inviting, and healthy living space requires careful consideration when selecting the perfect flooring. To guide you toward achieving this ideal environment, here are five easy steps.*





#### **WHERE**

*Our flooring is designed for many environments and we can offer optimal solutions for premises as diverse as hotel, office, retail, healthcare, museum, educational, residential and many more.*

#### **DURABILITY**

*All Bolon flooring carries an EN685 Class 32 (normal commercial use) or 33 (heavy commercial use) durability tag, making it a highly robust and long lasting with a warranty of 10 or 15 years.*

#### **SPECIAL QUALITIES**

*Are you seeking flooring with an attractive design and textile feel which are hygienic and hypoallergenic or other special qualities such as light reflection? Bolon flooring can offer these characteristics as well as a Bfl-s1 fire resistance.*

#### **FORM**

*We understand that no two floor spaces are the same. Our flooring reflects this. Available as tiles, rolls or even in special sizes, creativity and functionality live hand-in-hand in everyfloor we supply. Use Bolon Studio™ to create a unique flooring solution for your needs.*

#### **COLOUR AND PATTERN**

*With the right shade and pattern, even a larger room or corridor can convey a real sense of design unity. Select your design with respect to this as well as to pragmatic requirements such as dirt resistance.*





## CLEANING & MAINTENANCE INSTRUCTIONS

*The composition of a Bolon floor ensures that it is easy to clean and maintain. The floor is impermeable and solid, making it ideal for wet cleaning and cleaning machines. Stains are easy to remove with hot water.*





#### **THE RIGHT FLOOR IN THE RIGHT PLACE**

*Bolon flooring can be used in most interior areas, as it is both durable and easy to clean. Moreover, you should choose the colour of the flooring with care. Start by considering the function and the overall surroundings of the space where you plan to use Bolon flooring. If you need assistance, we are more than happy to guide you.*

#### **GENERAL**

*Correctly performed maintenance prolongs the floor's useful life. Factors such as colour, design or where the flooring is installed affect the need for cleaning. Floor maintenance consists of 3 parts: daily cleaning, weekly cleaning and periodic maintenance. In addition, there are precautions that prevent damage and make maintenance easier. An efficient entry system will save your floor from 85% of all incoming dirt. The entry system consists of an outdoor area and an indoor area. The outdoor entry system will scrape the dirt and the indoor entry system will absorb the dirt and moisture. With proper entrance zones you will save on cleaning and maintenance costs. For the choice of a decent entrance system, we recommend you let a professional advise you on the choice and size.*

*Ensure all table and chair legs have furniture pads, no sharp edges, and are made from stainless steel, polythene or similar. Prevent unnecessary wear and tear and discolouration by having hard polyamide wheels on chairs. Some types of rubber may cause discolouration due to migration with Bolon flooring. These kinds of discolorations can't be removed.*

*Do not use acetone or any polish on Bolon flooring, and no soap. Soap residue will cause dirt to adhere to it, which results in faster contamination of the Bolon floor.*

# DAILY

## VACUUM CLEANING

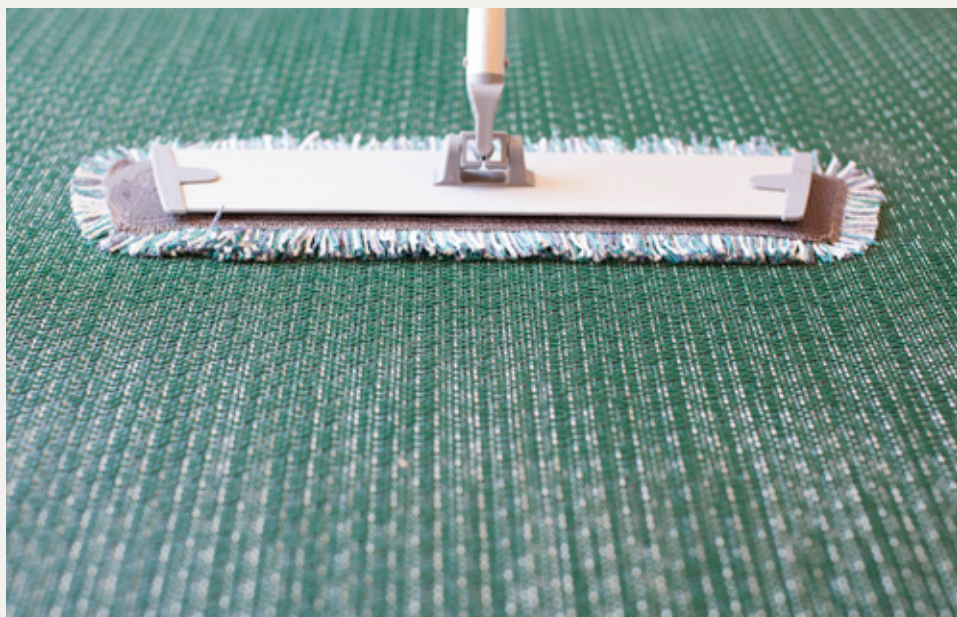


- You will remove 80% of the dirt such as loose dust and sand.
- Vacuum daily from skirting board to skirting board. Vacuum twice a week with the use of a vacuum cleaner with vertical rotating soft brushes.
- Regularly replace the dust bag or tank.

## STAIN REMOVAL



- Check for stains and remove them with hot water and a scrubbing brush, dry with a microfibre cloth.
- If the stains are still visible, a pH-neutral (pH 7-8) spraying cleaner without soap can be used on the stains.
- After using a pH-neutral cleaner, use hot water and a scrubbing brush and dry with a microfibre cloth.



STAIN		CLEAN WITH
Chocolate, fat, cheese		Hot water (70-100 degrees)
Juice, coffee, beer, wine		Hot water (70-100 degrees), if needed use a pH-neutral spraying cleaner
Asphalt, oil, shoe cream, chalk, ink		Chemically pure petrol
Blood		Cold water, ammonia if needed
Rust		Light acidic, (pH 3-4) cleaner
Water-based glue		Hot water, (70-100 degrees)
Solvent-based glue		Chemically pure petrol
Marks from shoes		Rub with dry cloth
Chewing gum		I-gum machine, hot water (70-100 degrees), steam or freeze spray
Indentation from furniture		Hot water (70-100 degrees), heat gun
Stearine		Hot water (70-100 degrees)

## WEEKLY

Vacuum cleaning does not remove all pollution. At least once a week, an additional damp cleaning is necessary. Depending on the size of the surface and the pollution, this can be done manually or mechanically. With larger surfaces and heavy soiling we recommend to be cleaned mechanically.



### MANUALLY



- *Mopping: Use a microfibre flat mop system with 2 buckets, one for clean and one for dirty water. Always use a clean mop. Suck up the water with a soft microfibre cloth or with a water vacuum cleaner.*
- *Brushing: Use a scrubbing brush and a bucket of water. Suck up the water with a soft micro-fibre cloth or with a water vacuum cleaner.*

### MECHANICAL



- *Wet Vac Scrubber-Dryer Method: The use of a wet vacuum scrubber dryer machine with vertical rotating soft brushes. If possible, clean the floor along the longitudinal weave direction.*
- *Smart Care Trio Encapsulation Method: Dirt and stains are encapsulated by crystals. These crystals are brushed and during the regular cleaning round sucked in with vacuum the flooring. For the Smart Care Trio the black vertical rotating brushes are needed.*

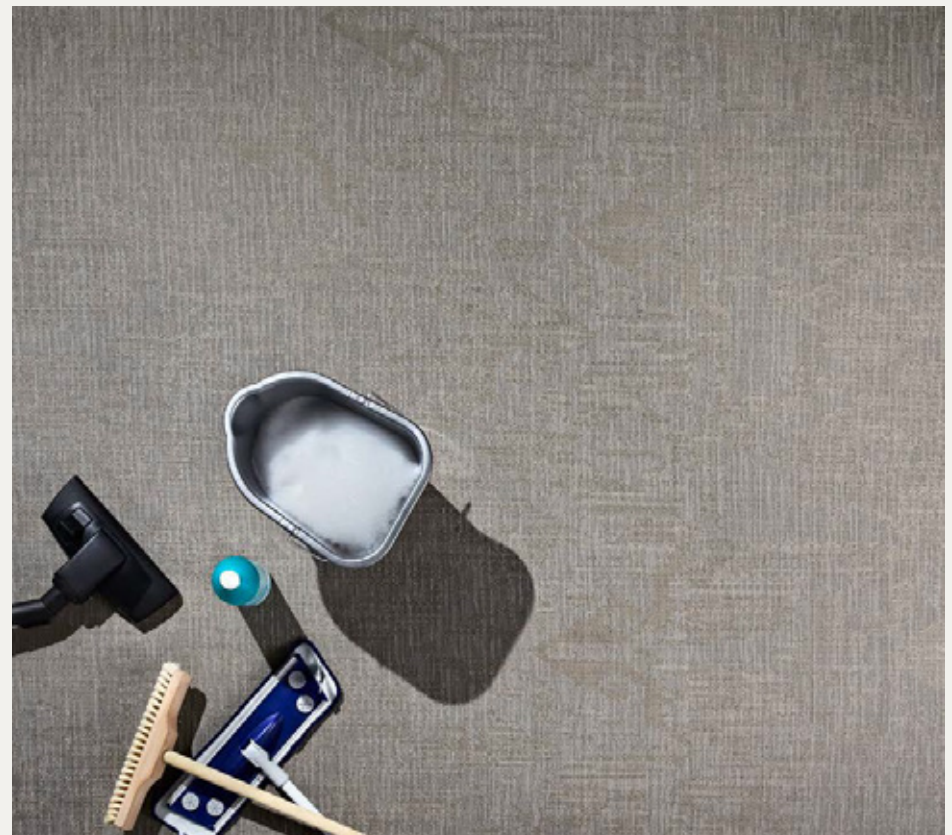
With vacuum you will remove 80% of the dirt.

## PERIODIC

### MECHANICAL



- *Office areas / once a year*
- *Entrance areas / twice a year*
- *Pantry areas / twice a year*
- *Traffic areas like corridors / twice a year*



## IN YOUR WORDS

*Bolon flooring has left a lasting impression on countless clientele, from enhancing productivity to creating environments that inspire creativity and elevate comfort. As you read through these testimonials, you'll gain insights into the diverse ways our flooring has exceeded expectations and set new standards of excellence.*



## HOSPITALITY

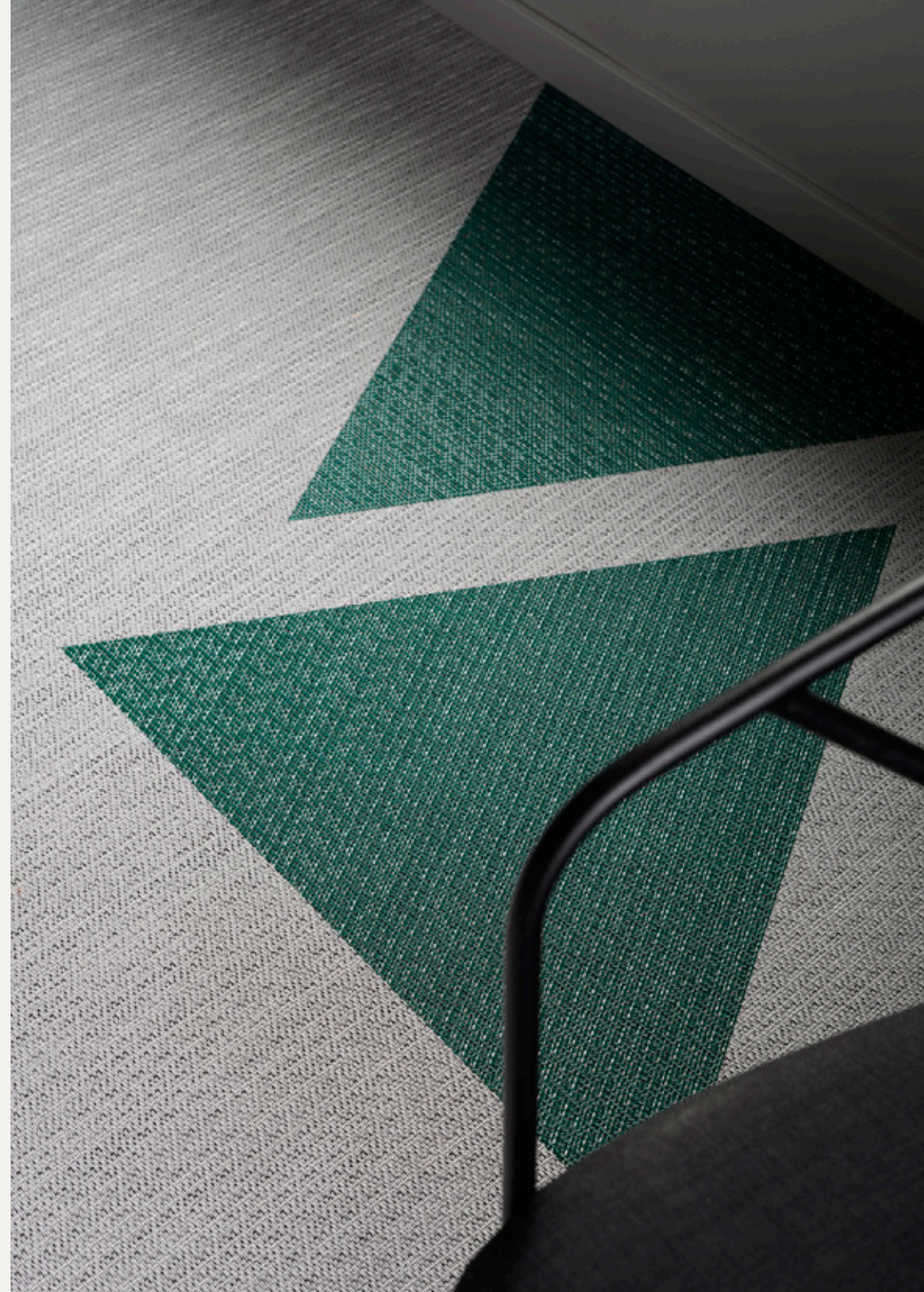
*Citybox Bergen - Guro Dolve Meyer  
Regional Operations Manager*

*"In Citybox Bergen we have a few rooms with the Bolon flooring from 2012. Most of the rooms have Bolon from 2017. In Citybox Danmarks plass the Bolon is from 2019. I love the Bolon flooring – it's texture, how it feels and looks, as well as the variety of designs. The floor really makes the room.*

*From a maintenance point of view, the floors are very durable and easy to maintain. All our hotels are Green Key certified, and sustainability is important for us. I therefore love the fact that Bolon is made from recycled materials, and that production has zero climate impact.*

*Cleaning Bolon is easy. No chemicals are needed, just clean with water (hot or cold). For deep cleaning we have Kärcher machines, and it works wonders. In the common areas we clean the Bolon every day. The guest rooms we do stay-over cleaning every other day, and of course on departure day. Mostly the floors are cleaned with a vacuum and a microfiber mop with water.*

*I love how Bolon has their own maintenance page on their homepage. Here we find tips and advice when we have a problematic stain. This has helped us a lot."*





## HOSPITALITY

*Citybox Tallinn, Helsinki, Antwerp - Teele Lepp  
Regional Operations Manager*

*"In Citybox Tallinn hotel flooring is from 2020 and in Citybox Antwerp hotel it is from 2021. So, in both hotels it's relatively new.*

*I love Bolon flooring, because it's easy to maintain and keep clean. I also love the fact that it's made from recycled materials and that it's allergy free. Nowadays, so many people have allergies and as we accept pets in our hotels, it is essential that we can clean flooring properly. Also I like the variety of colours and patterns that Bolon offers. By changing the direction of one piece on the floor you have totally new pattern.*

*Cleaning is super easy compared to regular carpets in the hotel rooms. No chemicals are needed, just fresh water. In case of stains it will be removed with hot water and voila it's clean as nothing ever happened. Twice a year we also use Kärcher machines to do a full wash for the flooring. Everyday cleaning with vacuum cleaner and microfiber mop with water, based on departures or daily cleaning needs. If there are stains then step 3 will be done.*

*I love the Bolon maintenance page with videos and steps how to clean and maintain their flooring – fool proof and easily understood for all nationalities and languages."*

## EDUCATION

*University of Melbourne - Tony Gould  
Key Account Manager ISS*

*"The University of Melbourne has Bolon flooring installed in many buildings in the Parkville campus. Bolon flooring covers approximately 90% of the total flooring in the Giblin Eunson Library (2000m<sup>2</sup>) and was installed in 2012. The library has an extremely high traffic load throughout its entirety. Nine years after installation the flooring is still in extremely good condition. Given the high-performance of the product, Bolon flooring is also been installed in the John Medley Building and Art West Building, to name a few.*

*ISS is a global facility management company and at the University of Melbourne maintains Bolon flooring using an encapsulation machine. The cleaning process is quick, efficient and operator friendly. Additionally only water is required to clean the flooring, eliminating the use of chemicals.*

*Bolon flooring is easy to clean and extremely durable, offering excellent appearance retention over time and a long product life."*



## STUDENT HOUSING

*Melbourne University Student Accommodation – Nathan Caplan  
Facilities and Operations Coordinator*

*"After nearly 6 years and millions of footsteps walking on Bolon flooring, the floors are still in fabulous condition. The floors get a simple routine clean regularly and each year, we perform a more thorough clean which brings the floors back to looking new again."*





## RETAIL

*Robert Daniëlle B.V. – Gonny & Rob  
Owners*

*"The Bolon Now Champagne on rolls has been installed in February 2012 in our shop. We sell exclusive women's fashion and the look of a Bolon flooring fits perfectly with that. Our experience of Bolon is very good and we have made many very positive recommendations, but straight from our hearts. Almost all customers noticed that it was a special floor covering. Keeping it clean is very easy: scrubbing, sweeping, mopping and vacuuming etc. so very easy!"*

*Snow, rain, dirt from the trees or sometimes even dog poop is easy to clean. Despite the fact the Bolon flooring looked great after daily and weekly cleaning we did a mechanical cleaning twice a year for the hygiene."*

# BOLON



SUITABLE FOR USE WITH  
MECHANICAL CLEANERS



WATER-  
RESISTANT



SIMPLE STAIN  
REMOVAL



SPILLS AND DIRT  
DO NOT PENETRATE



VINYL FLOORING,  
NO FIBRES